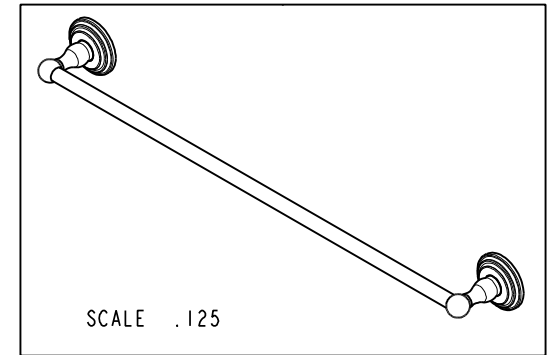
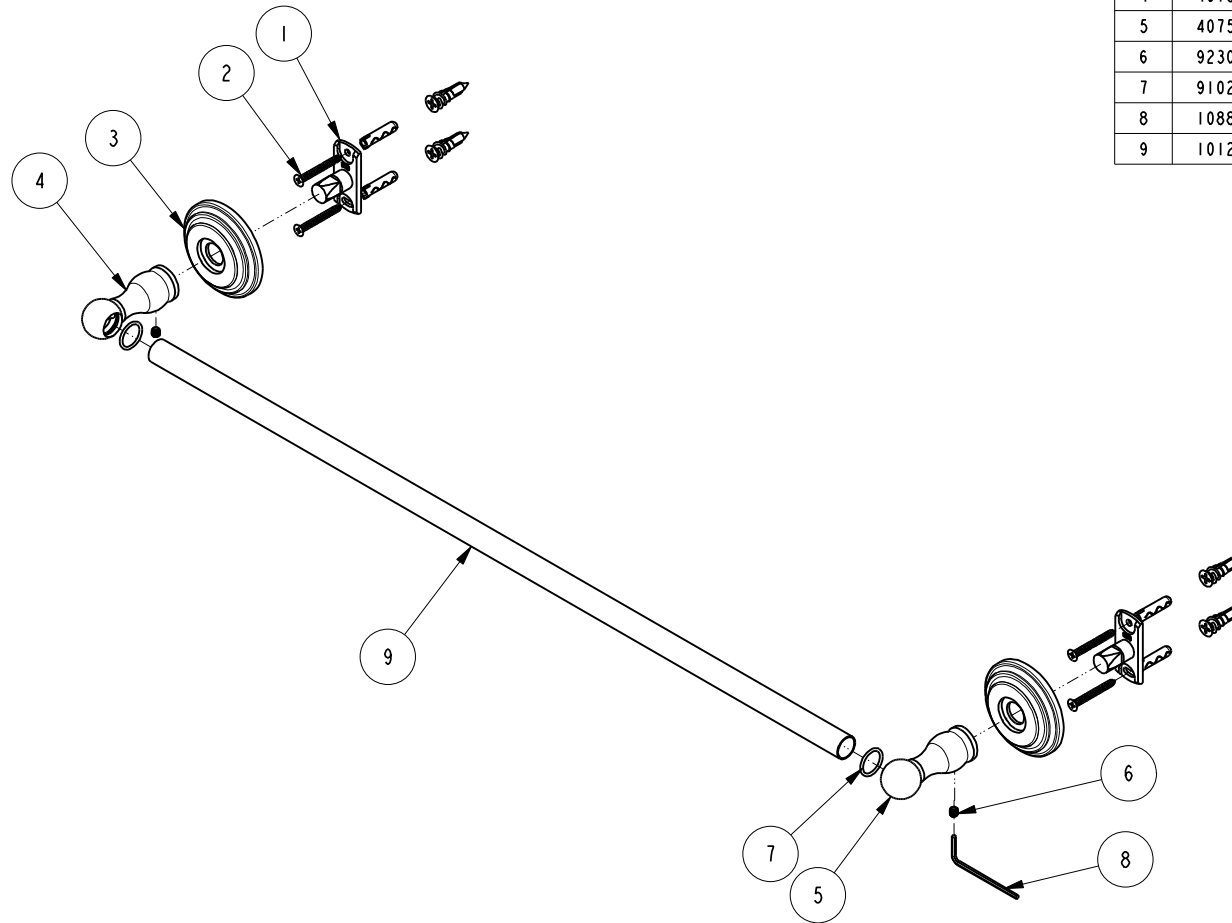


NOTES:

1. TO INSPECT ASSEMBLY, FOLLOW FIRST ARTICLE AND IN PROCESS INSPECTION SHEET.

**BILL OF MATERIAL (CURRENT LEVEL)**

ITEM	PT/ASSY	DESCRIPTION	TYPE	QTY.
1	11XXD	SOLID MOUNTING BRACKET	PART	2
2	1-206	HARDWARE PACK	ASSEMBLY	2
3	1100C	TOWEL SHELF ROSETTE	PART	2
4	40758	TOWEL BAR POST LEFT	PART	1
5	40759	TOWEL BAR POST-RIGHT	PART	1
6	92308	SCRW, M5 X 5 SKT HD CUP PT W/ SELF LOC SS	PART	2
7	91020	O-RING, #2-016, EPDM, 65-75 DURO, NSF 61	PART	2
8	10888	HEX KEY, 2.5MM ALLOY STEEL	PART	1
9	10124	24 IN. TOWEL BAR	PART	1



ZONE	REV	DESCRIPTION	DATE	APPROVED
-	B	EN-4378	07/20/21	R.S.
-	A	EN-4032	11/22/19	R.S.
-	-	RELEASED	02/01/04	-

COPYRIGHT 2005 BRASSTECH, INC. THESE DRAWINGS AND THE DESIGNS DEPICTED HEREIN ARE THE PROPRIETARY PROPERTY OF BRASSTECH. ANY USE OR REPRODUCTION IS SUBJECT TO THE EXPRESS APPROVAL OF BRASSTECH. UNAUTHORIZED USE IS STRICTLY PROHIBITED. ALL RIGHTS RESERVED.

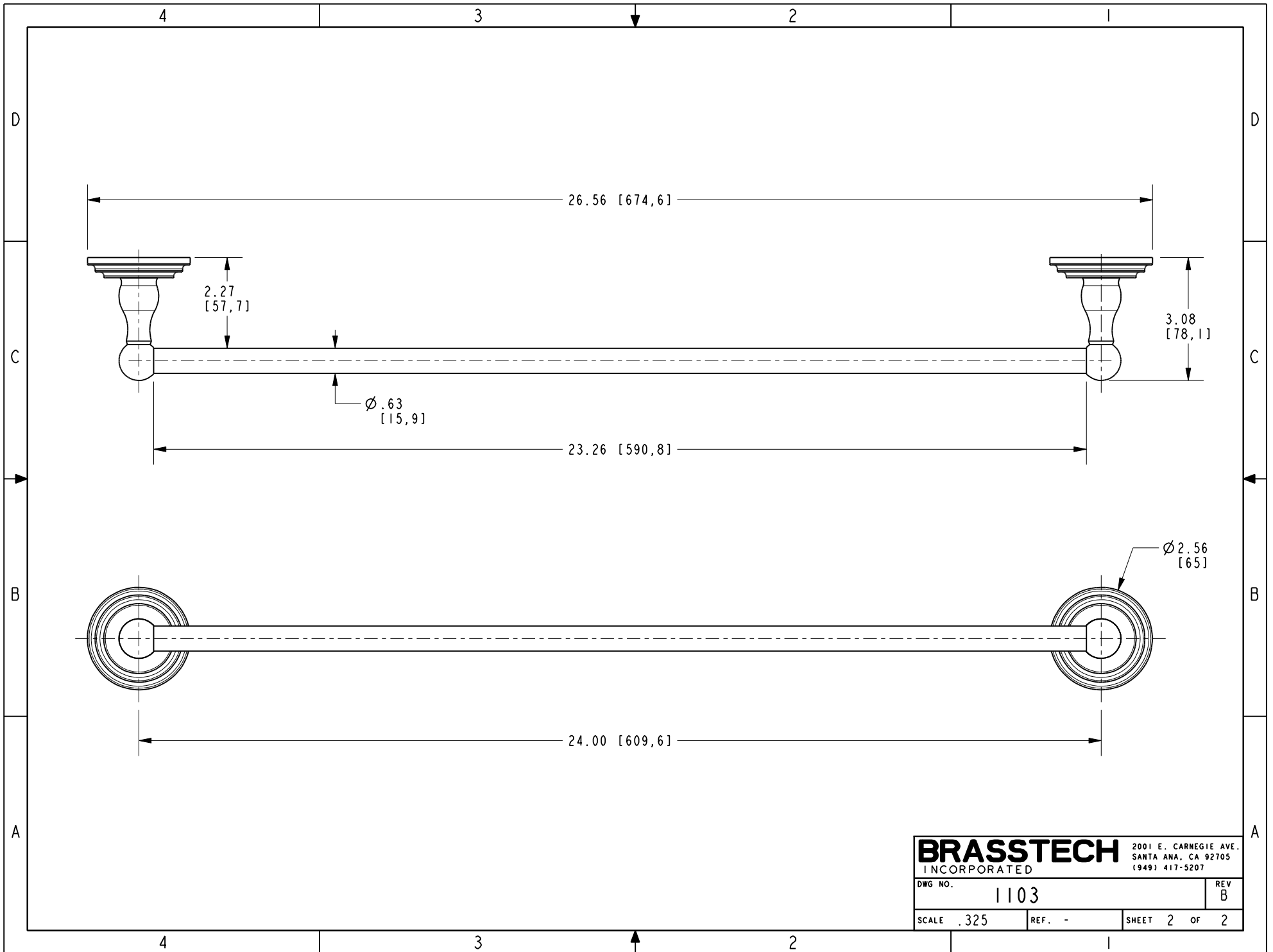
TESTING	ASSEMBLY	PLATING	POLISHING	MACHINING	TOOLING FIXTURE #	APPLICATION
-	-	-	-	-		
-	-	-	-	-		
-	-	-	NEXT ASSY	USED ON		
-	-	-	-	-		
						REMOVE ALL BURRS AND SHARP EDGES

UNITS ARE: INCHES [MM]			
TOLERANCES ARE:			
FRACTIONS DECIMALS	ANGLES		
±1/16"	±1°		
.x ±.1 [2.5]			
.xx ±.06 [1.5]			
(X.XXX) DENOTES CRITICAL DIMS.			
ALL THREADS ARE CRITICAL			
DRAWN	JINSON	07/20/21	
CHECKED	R.S.	07/20/21	
APPROVED	R.S.	07/20/21	

**BRASSTECH** 2001 CARNEGIE AVE.  
INCORPORATED SANTA ANA, CA 92705  
(949) 417-5207

24" TOWEL BAR

DWG NO.	REV
1103	B
SCALE .250	REF. -
SHEET 1	OF 2



<b>BRASSTECH</b>		2001 E. CARNEGIE AVE. SANTA ANA, CA 92705 (949) 417-5207	
DWG NO.	1103	REV	B
SCALE	.325	REF.	-
		SHEET	2 OF 2