

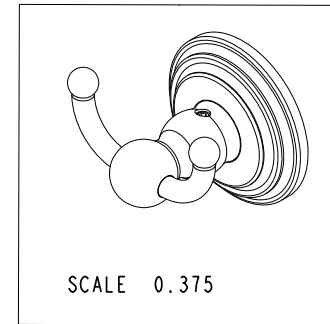
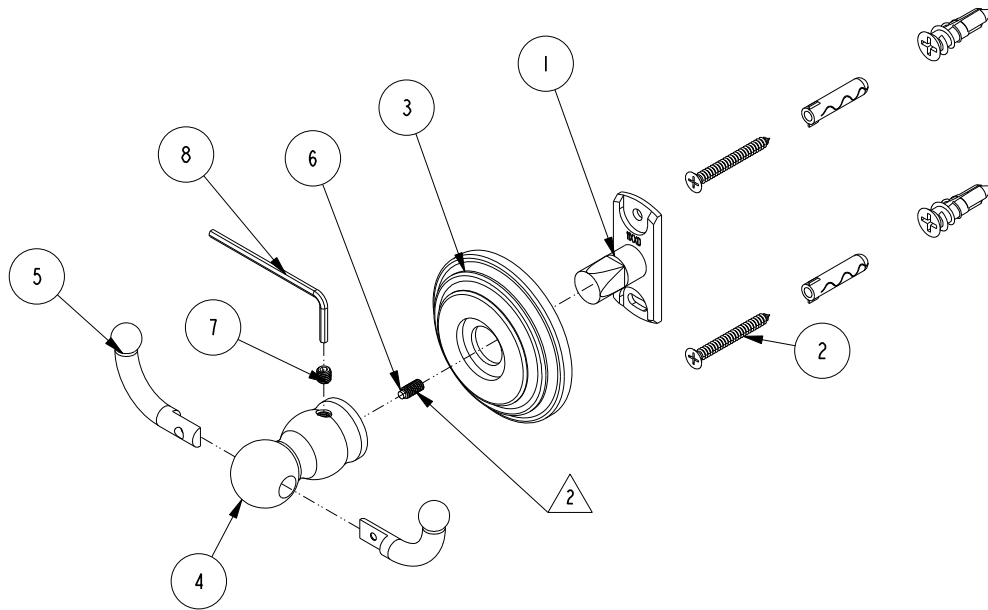
NOTES:

1. TO INSPECT ASSEMBLY, FOLLOW FIRST ARTICLE AND IN PROCESS INSPECTION SHEET.

2 APPLY PERMANENT THREAD LOCKER (LOCTITE 680)

BILL OF MATERIAL (CURRENT LEVEL)

ITEM	PT/ASSY	DESCRIPTION	TYPE	QTY.
1	11XXD	SOLID MOUNTING BRACKET	PART	1
2	1-206	HARDWARE PACK	ASSEMBLY	1
3	1100C	TOWEL SHELF ROSETTE	PART	1
4	40751	POST- DOUBLE ROBE HOOK	PART	1
5	40756	HOOK ARM	PART	2
6	92903	SCRW, 8-32 X 3/8 SKT HD DOG PT SS	PART	1
7	92308	SCRW, M5 X 5 SKT HD CUP PT SS	PART	1
8	10888	HEX KEY, 2.5MM ALLOY STEEL	PART	1



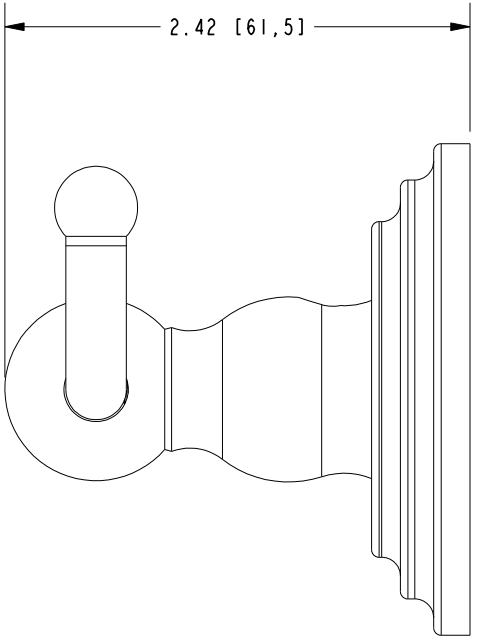
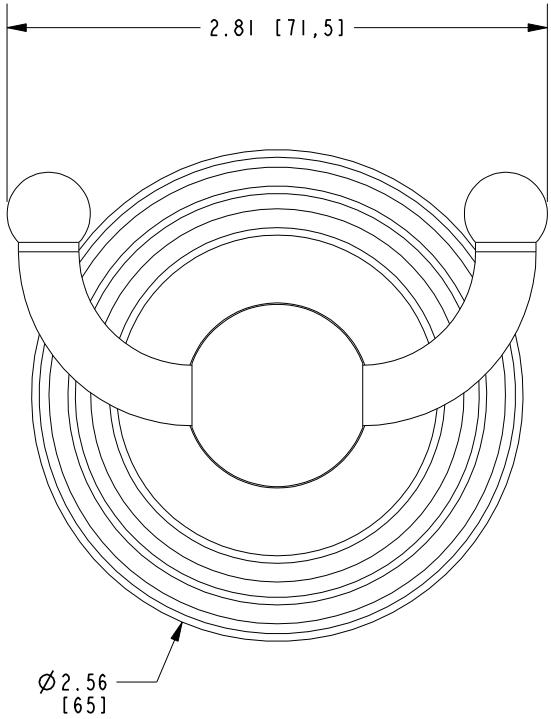
-	B	EN-4300T	06/29/22	R. S.	COPYRIGHT 2005 BRASSTECH, INC. THESE DRAWINGS AND THE DESIGNS DEPICTED HEREIN ARE THE PROPRIETARY PROPERTY OF BRASSTECH. ANY USE OR REPRODUCTION IS SUBJECT TO THE EXPRESS APPROVAL OF BRASSTECH. UNAUTHORIZED USE IS STRICTLY PROHIBITED. ALL RIGHTS RESERVED.	TESTING	-	-	-
-	A	EN-4378	07/27/21	R. S.		ASSEMBLY	-	-	-
-	-	RELEASED	02/01/04	-		PLATING	-	-	-
ZONE	REV	DESCRIPTION	DATE	APPROVED		POLISHING	-	NEXT ASSY	USED ON
						MACHINING	-	APPLICATION	
						TOOLING FIXTURE #	REMOVE ALL BURRS AND SHARP EDGES		

UNITS ARE: INCHES [MM]		
TOLERANCES ARE:		
FRACTIONS	DECIMALS	ANGLES
±1/16"	.X ±.1 [2.5]	±1°
	.XX ±.06 [1.5]	
(X.XXX) DENOTES CRITICAL DIMS.		
ALL THREADS ARE CRITICAL		
DRAWN	JINSON	10/25/21
CHECKED	R.S.	10/25/21
APPROVED	R.S.	10/25/21

BRASSTECH 2001 CARNEGIE AVE.
 INCORPORATED SANTA ANA, CA 92705
 (949) 417-5207

DOUBLE ROBE HOOK

DWG NO.	1111	REV	B
SCALE	.312	REF.	-
SHEET	1	OF	2



BRASSTECH		2001 E. CARNEGIE AVE. SANTA ANA, CA 92705 (949) 417-5207	
DWG NO.		REV	B
SCALE .500	REF. -	SHEET 2	OF 2